

DESIGN IT!

ELECTRICAL AND INSTRUMENTATION DESIGN SOFTWARE

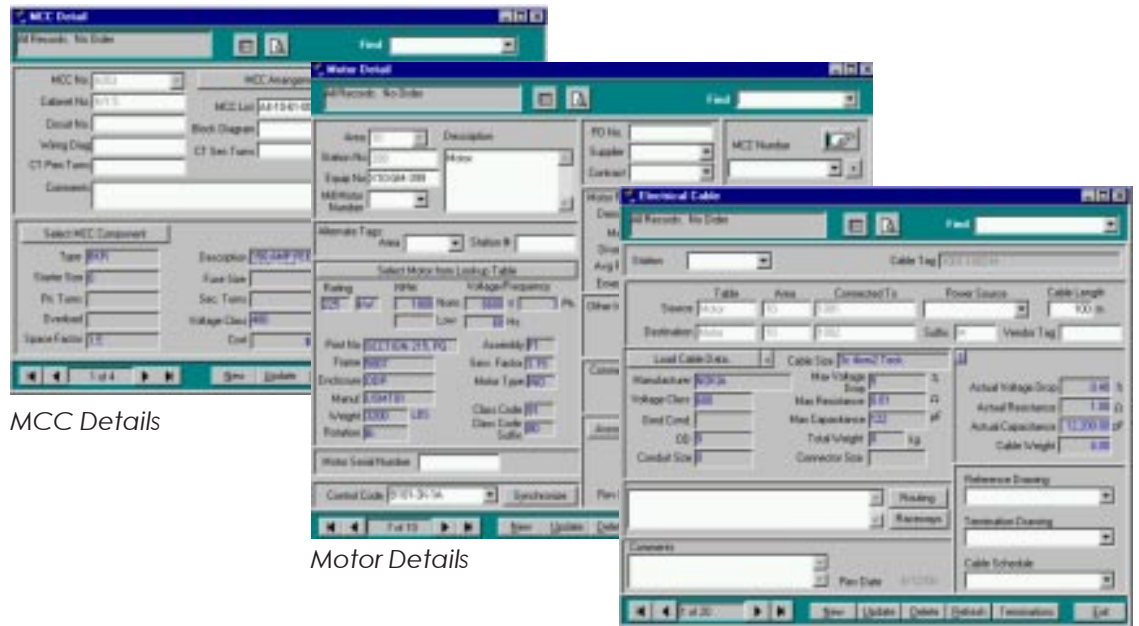
ELECTRICAL FEATURES

- Motor Management
- MCC Management
- Equipment Management
- Equipment Specification Sheets
- Motor Specification Sheets
- Electrical Cable Management
- Cable Termination
- Cable Raceway Management
- Voltage Drop Analysis
- Dynamic and Flexible Search and Filter Capabilities
- Automatically generates Motor Schematic Drawings
- Automatically generates MCC Block Diagrams

Electrical Design

Design It! Software manages all of the components associated with an electrical design.

Design It! identifies and manages a motor by its technical data and tagging description. Technical data, such as motor type, manufacturer and voltage information is listed in the Motor Lookup Table.



MCC Details

Motor Details

Instrument Cable Management and Inter Connections

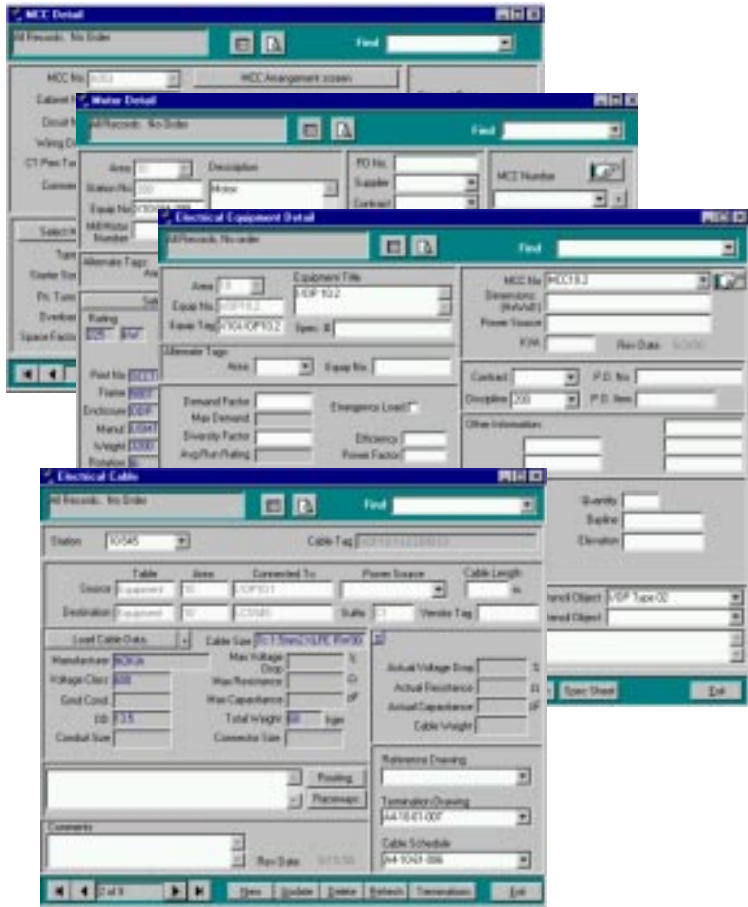
Design It! integrates Motors, Cables, Power Systems into a single consistent solution. **Design It!**'s drawing engine automatically creates MCC Block Diagrams and Motor Schematics in Viso, Autocad, or Microstation formats. Output deliverables are fully user defined using industry standard Crystal Reports.

Design It!'s Newest Features!

- We have added **Excel and HTML Export/Import Capabilities** for the Instrument Specification Sheets, Process Data Sheets, and Electrical Equipment Specification Sheets. This preserves the layout of the Specification Sheet and allows for editing. The importing capabilities allow the edited information to be integrated back into **Design It!**
- Process Data Sheets, Instrument Specification Sheet, and Electrical Equipment Specification Sheets now have the ability to have **Multiple Pages per Specification Sheet**, containing unlimited user defined fields.
- The Cable Module now supports **Voltage Drop Analysis** and display. Interactive calculation provides instantaneous feedback for the loading of cables, including weight, resistance, and impedance.

Design It! automatically generates Motor Schematic Drawings, MCC Block Diagrams and Instrument Loop Diagrams, based on the database design.

Electrical



Electrical Cable Management and Inter Connections – Cable Management is for the most part fully automated. As soon as a motor, loop or device is assigned a control code, **Design It!** automatically creates, sizes and terminates all the necessary cables and wires. Furthermore, the cable size and voltage is updated continuously with any manual changes you make to the design.

Voltage Drop Analysis – This is one of the many new features in **Design It!** The Cable module now supports voltage drop analysis and display. Interactive calculation provides instantaneous feedback for the loading of cables, including weight, resistance and impedance.

Specification Data Sheets for Motors and Equipment - Specification Sheets are very flexible and versatile. Specification sheets may have different user-definable borders, unlimited user defined fields and multiple pages. They also may contain graphic objects and have many colors.

The screen layout and content is easily modified using drag and drop technology. The screen definition is used to automatically create reports, in Excel and HTML output, all without needing to write any code!

Motor Management - Design It! identifies and manages a motor by its technical data and tagging description. Technical data, such as motor type, manufacturer and voltage information is listed once in the Motor Lookup Table

Equipment Management - Design It! manages Electrical Equipment. This includes MCC's, control panels, junction boxes, and I/OP's, etc.

MCC Management - Assigning a motor to an MCC establishes the power source and provides a mechanism for controlling the motor. The MCC is a focal point for managing the control strategy of a system.

When the motor is assigned to an MCC, a number of sequences and events may occur. These include the following:

- Selecting and sizing an appropriate starter for the motor
- Defining and sizing the motor feeder cables, and
- Defining and sizing control cable(s).

MCC Block Diagram - To draw an MCC Arrangement and Block Diagram, simply select the drawing number and **Design It!** will extract and place all items in the correct sequence on the Drawing.

