

DESIGN IT!

ELECTRICAL AND INSTRUMENTATION DESIGN SOFTWARE

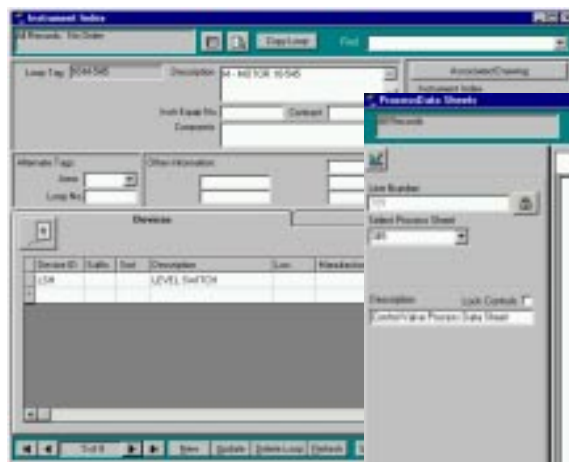
KEY FEATURES

- Instrument Index
- Instrument Specification Sheets
- Process Data Sheets
- Instrument Cable Management
- Cable Termination Management
- Cable Raceway Management
- Voltage Drop Analysis
- Instrument Hookup Drawings
- Dynamic and Flexible Search and Filter Capabilities
- Calibration Settings
- Dynamic and Flexible Search and Filter Capabilities
- Control System Point Management

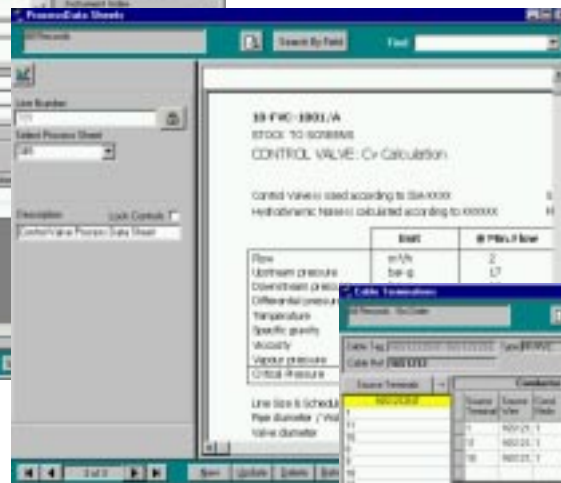
Instrumentation Design

Design It! Software manages all of the components associated with an instrumentation design.

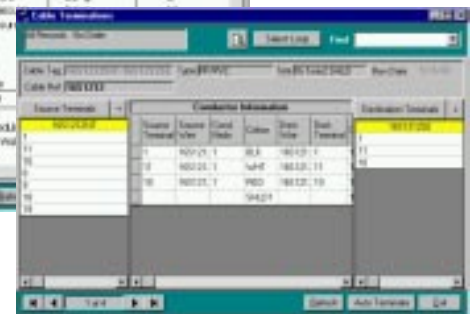
Design It! manages Loops and Devices, along with their Specification Sheets and inter relationships with Cables, Junctions Boxes, Panels and Control System Points. Output deliverables include fully user definable Device Specification Data Sheets, Loop Diagrams and Instrument Index Reports.



Instrument Index



Process Data Sheets



Instrument Cable Management and Inter Connections

Design It!'s Newest Features!

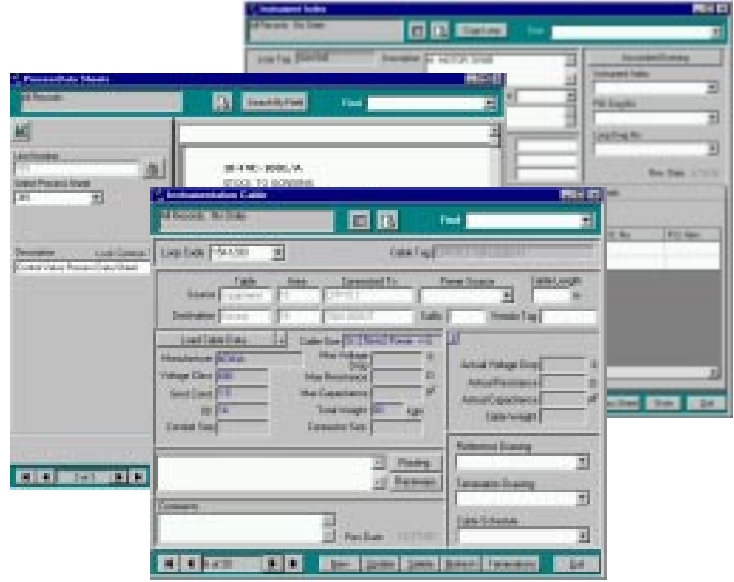
- We have added **Excel and HTML Export/Import Capabilities** for the Instrument Specification Sheets, Process Data Sheets, and Electrical Equipment Specification Sheets. This preserves the layout of the Specification Sheet and allows for editing. The importing capabilities allow the external information to be integrated back into **Design It!**
- Process Data Sheets, Instrument Specification Sheet, and Electrical Equipment Specification Sheets now have the ability to have **Multiple Pages per Specification Sheet**, containing unlimited user defined fields.
- The Instrument Index is now extended to include **Instrument Hookup Diagrams, and Calibration Settings** which are both fully customizable
- The Cable Module now supports **Voltage Drop Analysis** and display. Interactive calculation provides instantaneous feedback for the loading of cables, including weight, resistance, and impedance.

Design It! automatically generates Instrument Loop Diagrams, Junction Box Layouts and Specification Sheets based on the database design.

Instrumentation

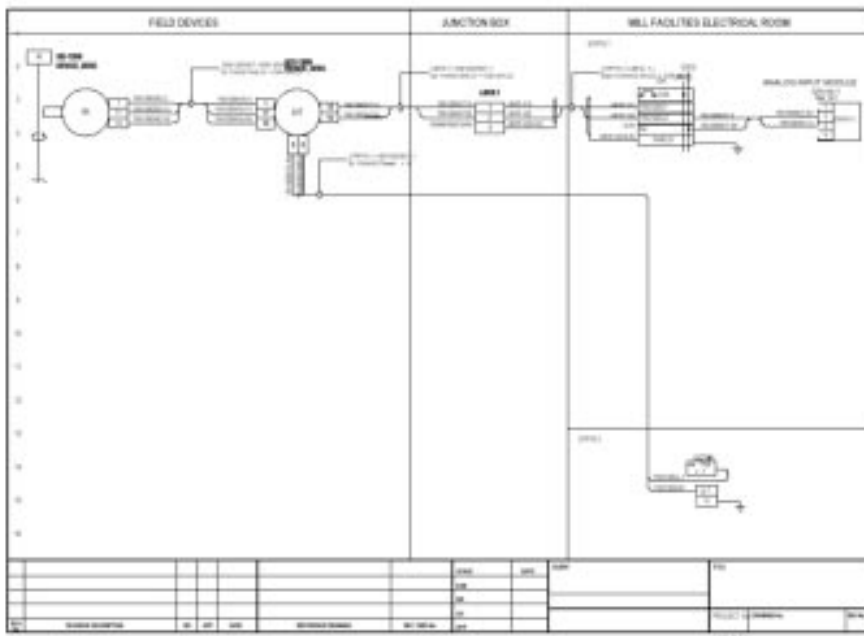
Specification Data Sheets for Instruments, Process Data and Equipment - Specification Sheets are very flexible in that a user may change the layout of both the screen and the report for all of their specification sheet types. Each sheet may have different user-definable borders, unlimited user defined fields and multiple pages. They also may contain graphic objects and have many colours.

ITEM	QTY	UNIT PRICE	AMOUNT	TOTAL PRICE
Control Valve	1	1000.00	1000.00	1000.00
...



Instrument Hookup Drawings - Design It! Instrument Hookup Drawings provides a utility that manages the installation details and components. The Hookup Diagram provides a dynamic Bill of Materials for Instrumentation.

The Hookup Drawings module is very user friendly. It is flexible in that a user may change the layout of both the screen and the report for all of their Hookup Drawings. The user can also select different user-definable borders for each Hookup Drawing type, as they appear on screen and on the printed Hookup Drawing.



Instrumentation Equipment Management - In Design It!, manages Instrument Equipment including Junction Box, Marshalling Racks and Control Systems.

Instrument Cable Management and Inter Connections - Cable Management is for the most part fully automated. As soon as your motor, loop or device is assigned a control code, **Design It!** automatically creates, sizes and terminates all the necessary cables and wires. Furthermore, the cable size and voltage is updated continuously with any manual changes you make to the design.

Instrument Loop Diagram - A Loop Diagram is automatically drawn base on the contents of the database. All components are extracted from the database and handed to the drawing engine. The drawing Engine organizes, positions and draws all items based upon the CADD Library properties.